



SQ FT = 1,380 (30x46)

SQ FT = 7,590  
(46x(119+46))

SQ FT = 1,380 (30 x 46)

TOTAL SQ FT =  
10,350 (1,380 +  
1,380 + 10,350)

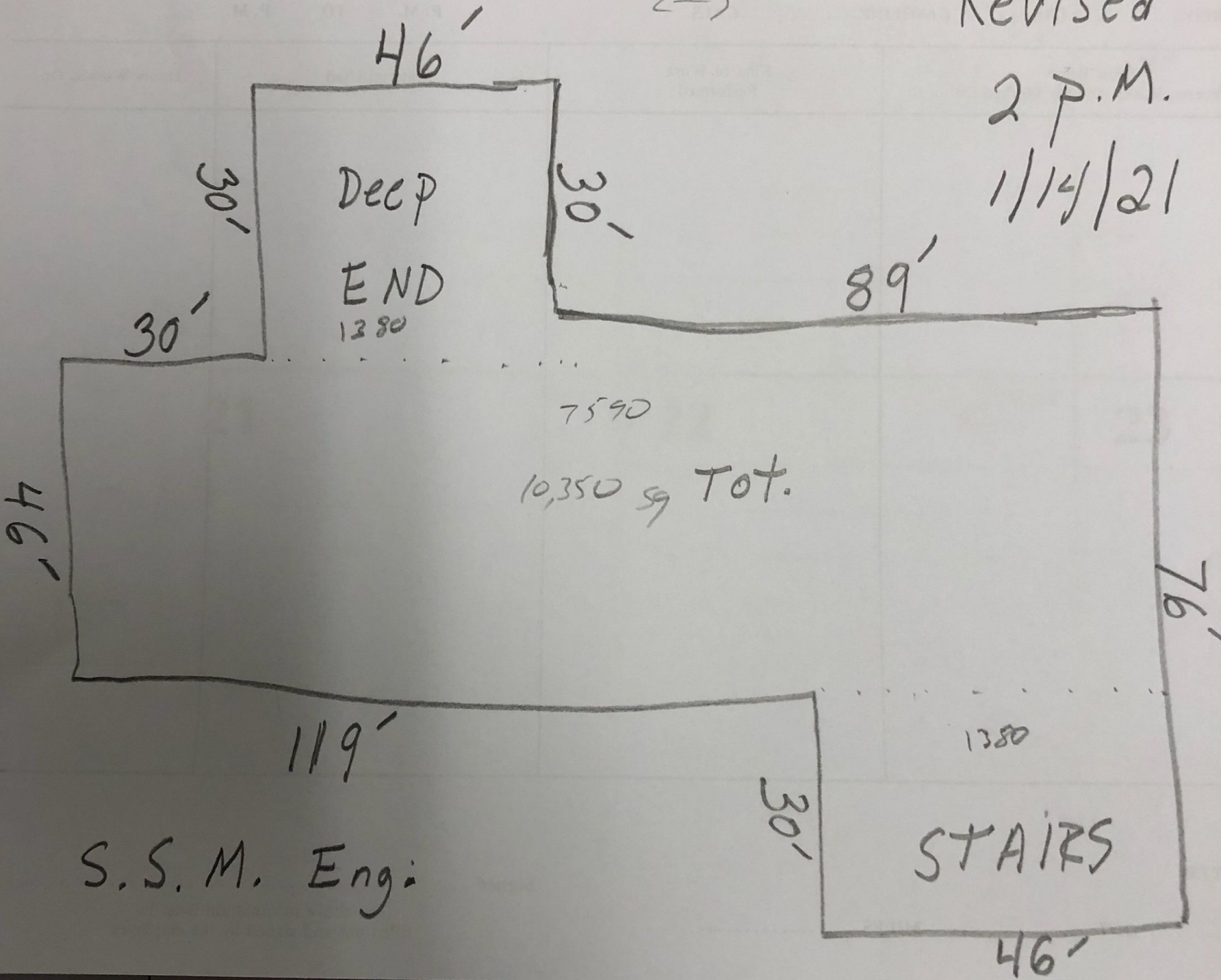


165  
←→

Revised

2 P.M.

1/14/21



DEEP

END

1380

7590

10,350 sq Tot.

89'

1380

STAIRS

S.S.M. Eng:

46'